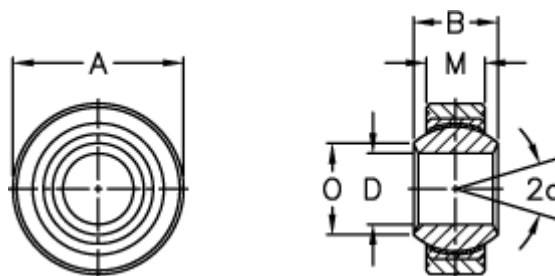


Article number: 03403005

Description: Fluro Rod end GLXSW 5

Measures



A	= 16
a (degrees)	= 13
B	= 8
D	= 5
Dynamic load C (kN)	= 7.5
M	= 6
O	= 7.7
Permissible rpm	= 600

Static load C0 (kN)	= 12.5
Weight	= 8